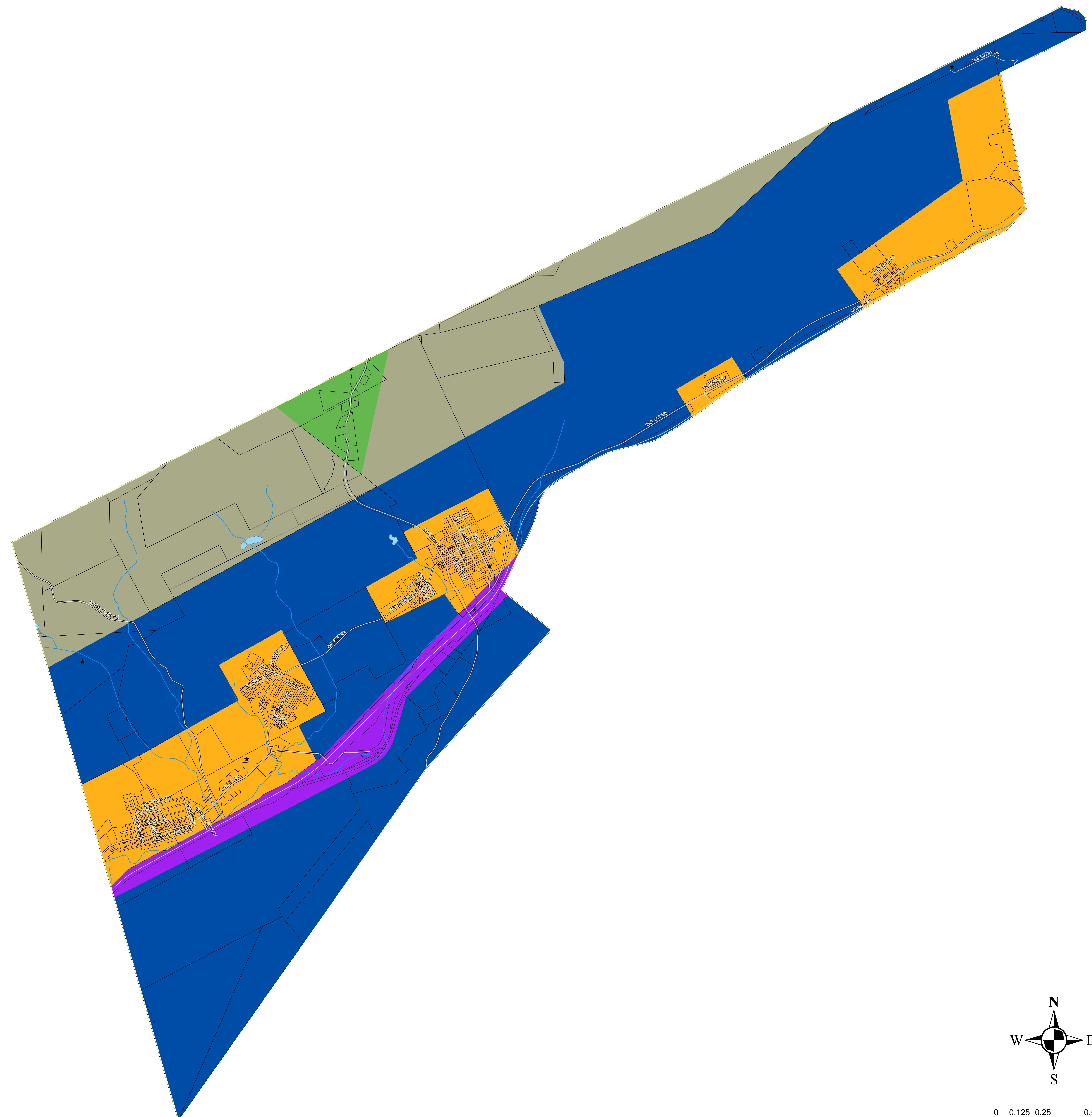


# Eastern Schuylkill Planning Zoning Map 27 Schuylkill Township

## ESP Zoning

- AP - Agricultural Preservation
- EAP - Enhanced Agricultural Preservation
- R-1 - Rural Agricultural, Low Density Rural
- R-2 - Residential, Low Density Suburban
- R-3 - Residential, Medium Density Suburban
- R-4 - Res. / Comm., Med. to High Density Suburban
- R-5 - Residential / Commercial, High Density Urban
- GC - General Commercial
- HC - Highway Commercial
- LI - Light Industrial
- GI-1 - General Industrial 1
- GI-2 - General Industrial 2
- WP - Woodland Preservation
- Municipal Boundary
- Water Courses
- Water Bodies
- Roads
- Parcels
- Leased Grounds



From time to time, for informational purposes only, it may be beneficial to add information, such as new streets, subdivisions, parcels, landmarks or other information which makes this official map more understandable.

Changes to the boundaries and districts of the Official Zoning Map shall only be made in conformity with the amendment procedures specified in the State Municipalities Planning Code. All changes will be noted by date with a brief description of the nature of the change, either on the map or within an appendix to the Ordinance.

Map dated March 4, 2016.  
Prepared for  
Eastern Schuylkill Planning  
by the Schuylkill County GIS Office.

